

SANDRA EHRENKRANZ

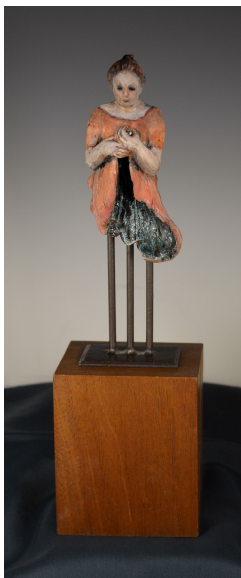
I came to sculpture after working as a painter for three decades. Although the medium changed, my focus has remained constant.

I continue to explore the human head and figure as a means of expressing ideas about working things out, breaking through boundaries (real or imagined), and transformation.

I often approach the work with a spirit of playfulness which has led to some very serious places. Usually beginning with clay and combining a variety of materials (metal, wood, glass), ideas evolve during the working process.

For years I have collected samples of clay and earth from places and events I find meaningful. Each of my pieces contains a bit of these materials, including earth from the family farm, to connect me to my roots.

As part of a disciplined focus, paying attention to inevitable surprises along the way allows me to stretch into unexpected directions.



Education

Penland School, Penland NC: 1989, 1991, 1993, 1995, 1997, 2004
Corcoran School of Art, Washington, DC, 1964
Graduate School of Drama, Yale University, New Haven, CT, 1960-1963
Stephens College, Columbia, MD, 1958-60

Honors

Grant for Bronze Sculpture, Greater Washington Collection of Fine Arts, 1996

Selected Exhibitions

The Show Must Go On, L Ross Gallery, Memphis, TN, 2018
Quietly Comest the Muse, duo, L Ross Gallery, Memphis, TN, 2018
Holiday Group Exhibition, L Ross Gallery, Memphis, TN, 2016
No: 10 Anniversary Show, L Ross Gallery, Memphis, TN, 2016
Summer Group Exhibition, L Ross Gallery, Memphis, TN, 2010-2016
Holiday Group Exhibition, L Ross Gallery, Memphis, TN, 2010-2014
Sculpture Show, L Ross Gallery, Memphis, TN, 2008
Holiday Group Exhibition, L Ross Gallery, Memphis, TN, 2008, 2007
Summer Group Exhibition, L Ross Gallery, Memphis, TN, 2007
First Anniversary Exhibition, L Ross Gallery, Memphis, TN, 2006
Sculpture Exhibition, L Ross Gallery, Memphis, TN, 2006
Grand Opening of L Ross Gallery, Memphis, TN, 2005
Duende Sculpture Group Exhibition, ArtForms, Memphis, TN, 2005
Transformations Sculpture Show, ArtForms, Memphis, TN, 2004
Gallery 222, Leesburg, VA, 2002
Ancient Passage Sculpture Show, ArtForms, Memphis, TN, 2003
Rose Gallery, Leesburg, VA, 2002
Art Santa Fe (with ArtForms), Sweeney Center, Santa Fe, NM, 2001
Steel, Stone and Clay: Sculpture 1999, ArtForms, Memphis, 1999

Publications

"Sandra Ehrenkranz," Art Galleries & Artists of the South, Vol. 2, Issue 2, 2006
Carol Knowles, "Baptism in Dark Waters," The Memphis Flyer, Memphis, TN, May 26-June 1, 2005
"Picks of the Week: Art," The Commercial Appeal, Memphis, TN, 28 May, 2000